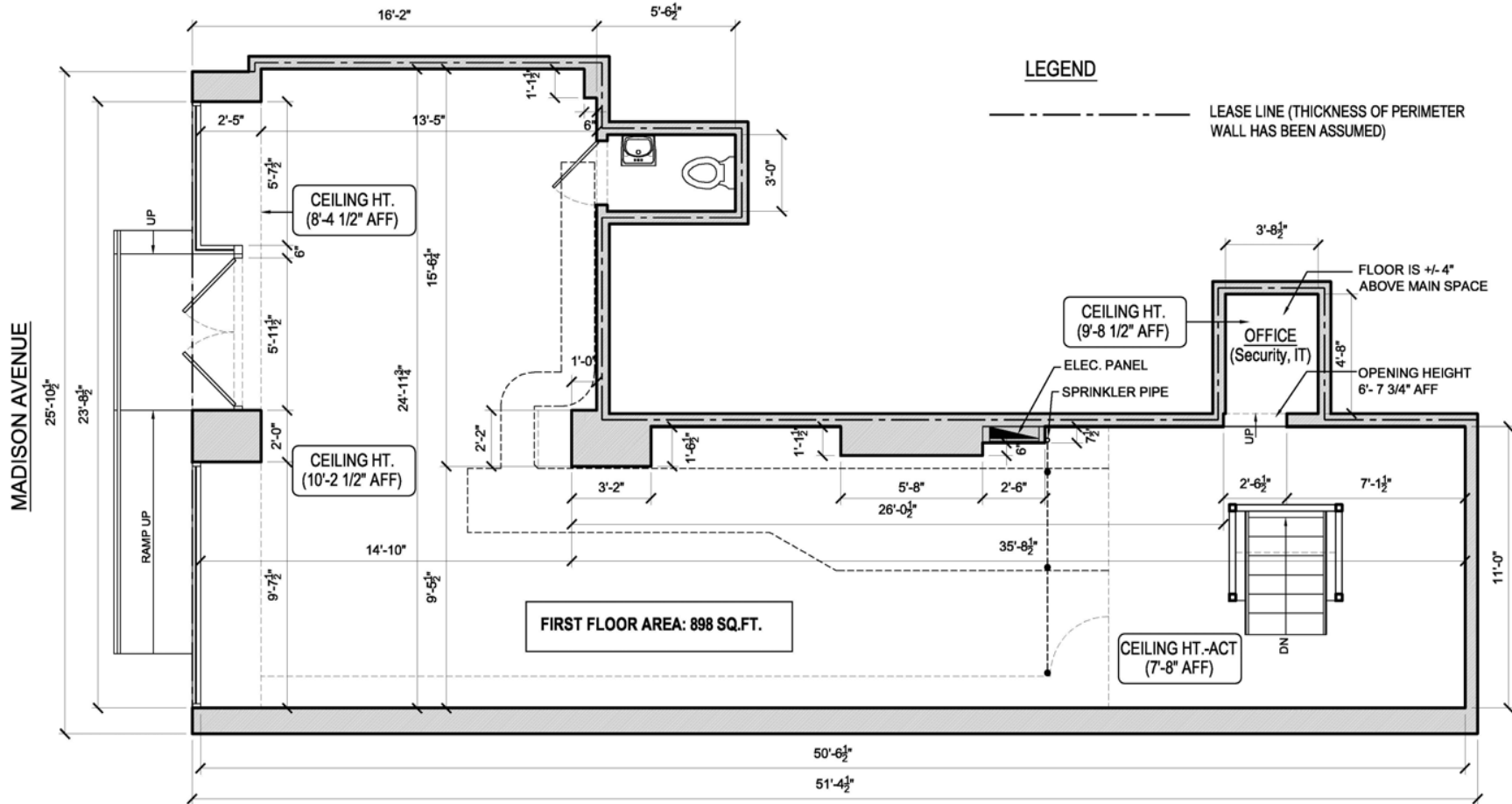


RETAIL AVAILABLE
1100 MADISON AVENUE

BETWEEN 82ND & 83RD STREETS / WESTSIDE

GROUND LEVEL - APPROX. 898 SF



FIRST FLOOR EXISTING CONDITIONS

FAITH HOPE CONSOLO
 fconsole@elliman.com

JOSEPH AQUINO
 jaquino@elliman.com

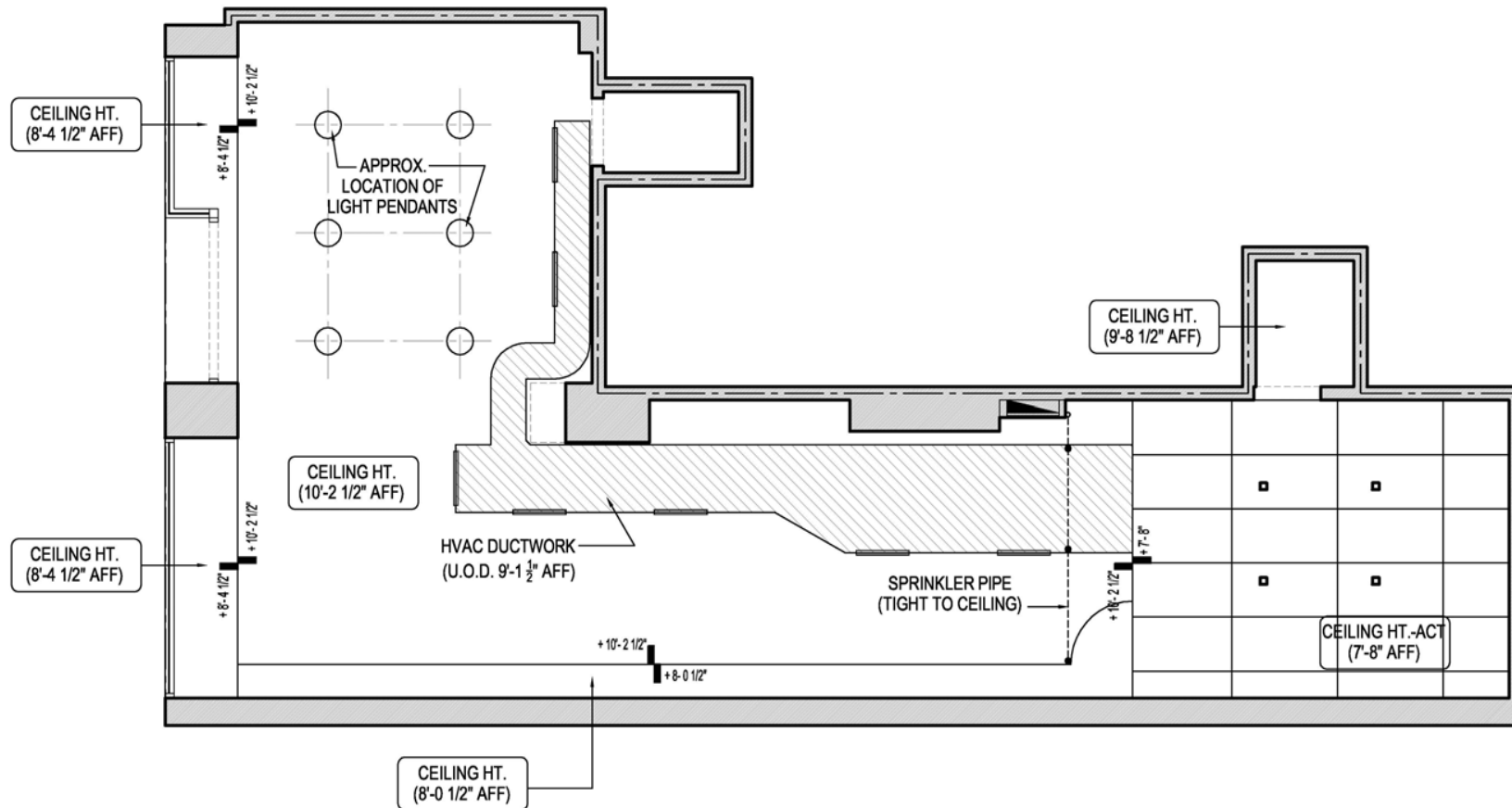
THE RETAIL GROUP



RETAIL AVAILABLE
1100 MADISON AVENUE

BETWEEN 82ND & 83RD STREETS / WESTSIDE

GROUND LEVEL - APPROX. 898 SF



FIRST FLOOR CEILING EXISTING CONDITIONS

Scale: 1/4" = 1'-0"



FAITH HOPE CONSOLO
 fconsole@elliman.com

JOSEPH AQUINO
 jaquino@elliman.com

THE RETAIL GROUP

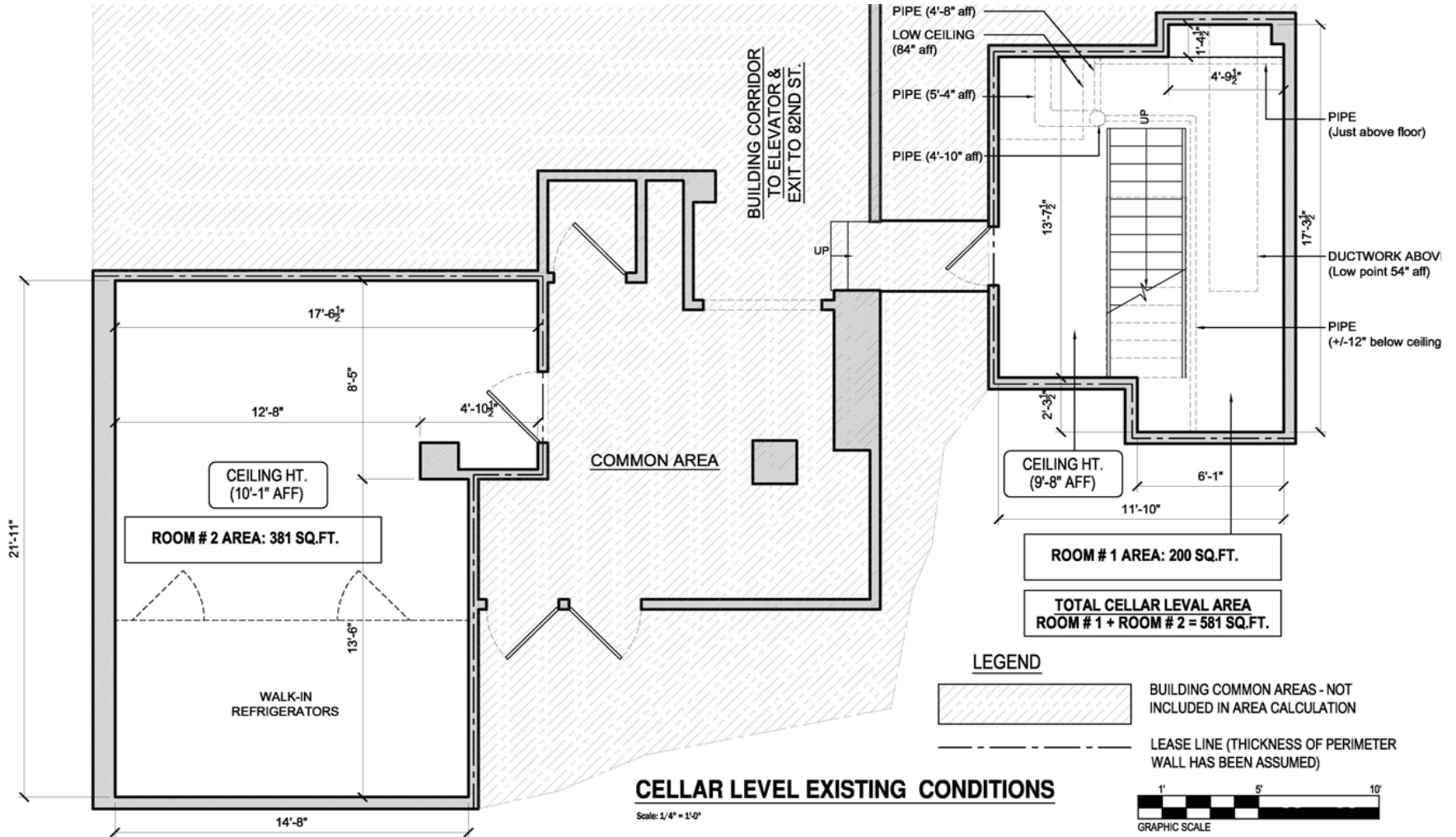


RETAIL AVAILABLE

1100 MADISON AVENUE

BETWEEN 82ND & 83RD STREETS / WESTSIDE

BASEMENT LEVEL - APPROX. 581 SF



FAITH HOPE CONSOLO
fconsole@elliman.com

JOSEPH AQUINO
jaquino@elliman.com

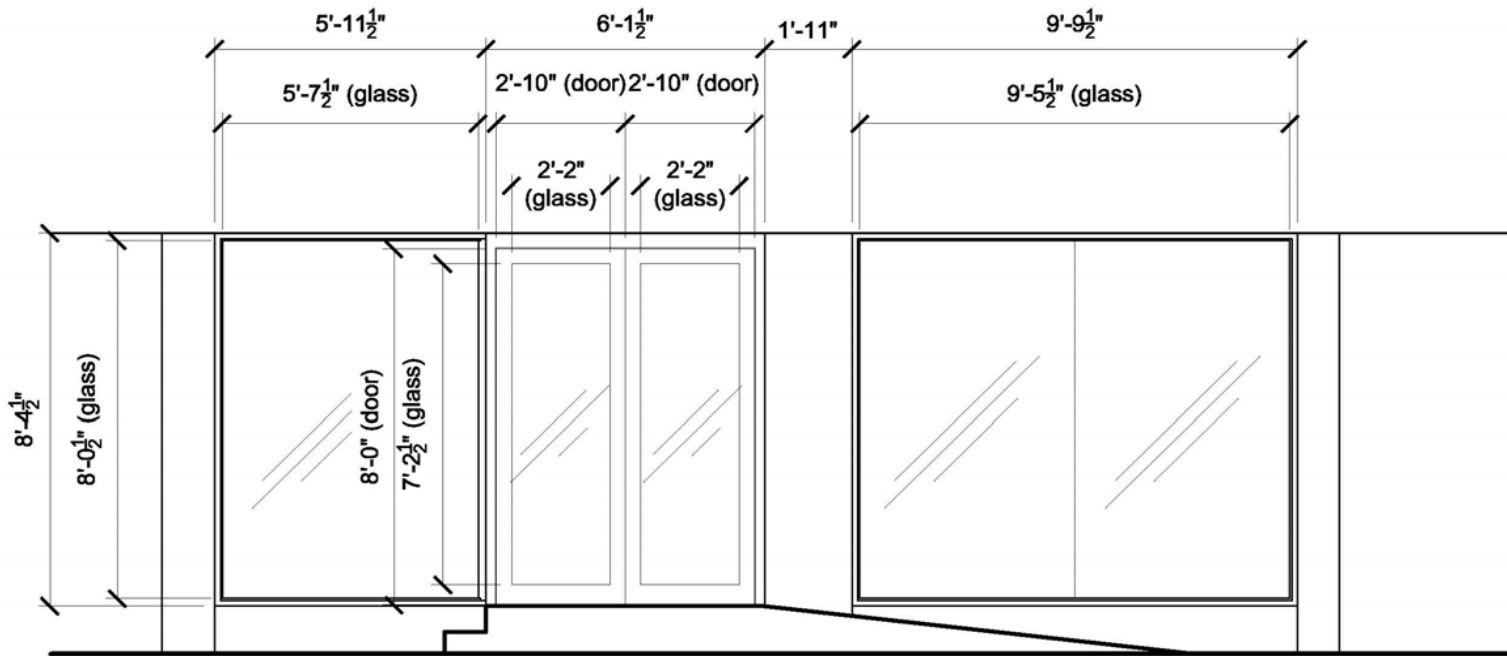
THE RETAIL GROUP



RETAIL AVAILABLE
1100 MADISON AVENUE

BETWEEN 82ND & 83RD STREETS / WESTSIDE

GROUND LEVEL - APPROX. 898 SF



NOTE: RAMP RAILING AND EXISTING CANOPY ARE NOT SHOWN FOR CLARITY

STOREFRONT WINDOWS & DOORS EXISTING CONDITIONS

Scale: 1/4" = 1'-0"

FAITH HOPE CONSOLO
fconsole@elliman.com

JOSEPH AQUINO
jaquino@elliman.com

THE RETAIL GROUP

