

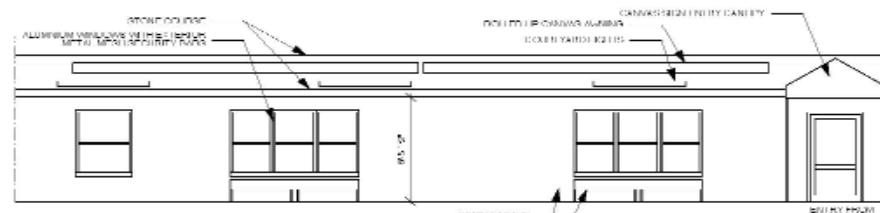
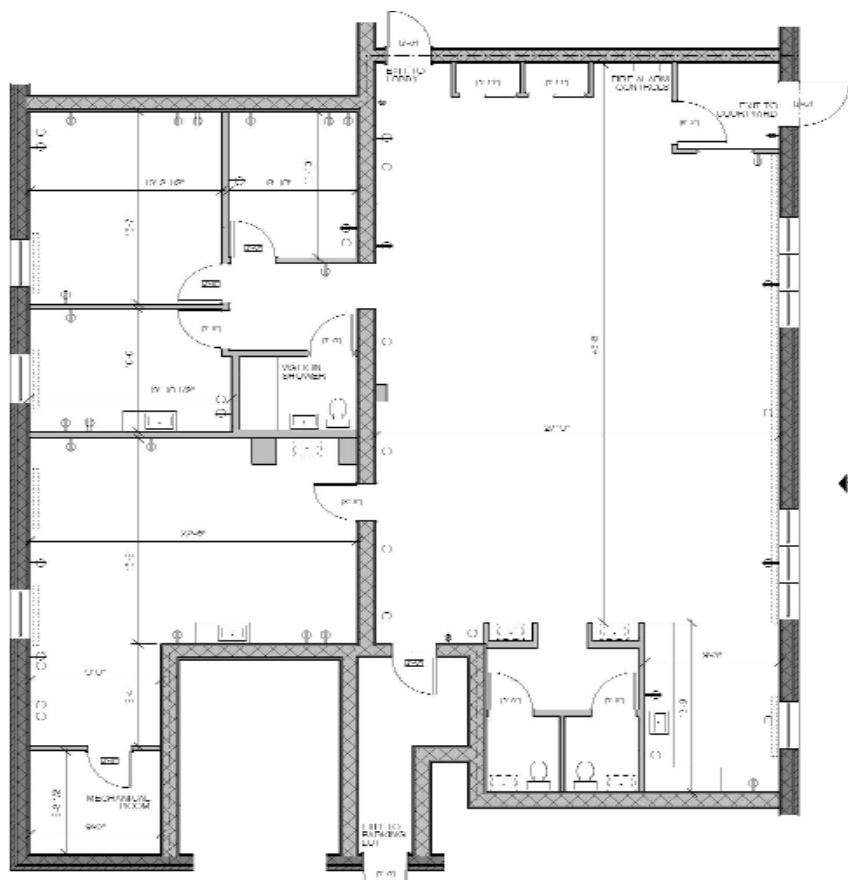
# 1714 LEXINGTON AVENUE

NORTHWEST CORNER OF 107TH STREET

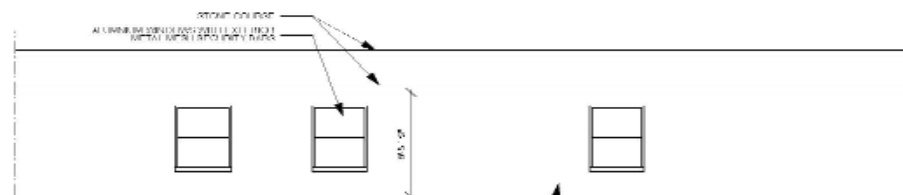
# EAST HARLEM

COMMUNITY/MEDICAL SPACE

## SPACE A



EXTERIOR ELEVATION



EXTERIOR ELEVATION

### COMMUNITY/MEDICAL SPACE AVAILABLE

**DESCRIPTION:** SPACE A - APPROX. 2,981 SF  
SPACE B - APPROX. 2,252 SF

### EXCLUSIVE AGENTS:

**JOSEPH AQUINO**

EXECUTIVE VICE PRESIDENT  
jaquino@elliman.com

**ARTHUR MAGLIO**

CONSULTANT  
amaglio@elliman.com



575 MADISON AVENUE,  
3<sup>RD</sup> FLOOR, NY, NY 10022  
TEL. 212. 418. 2020  
FAX. 212. 418. 2005  
WWW.ELLIMAN.COM

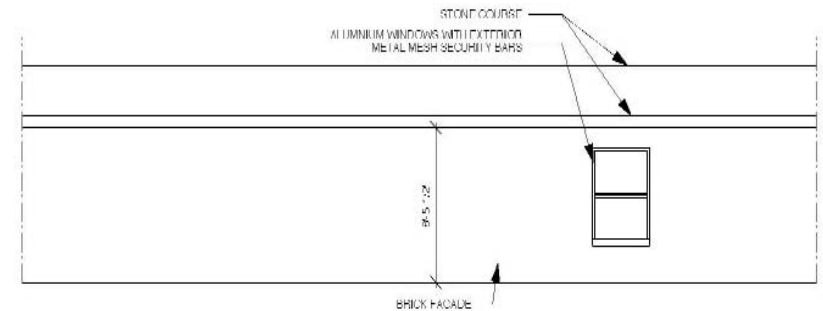
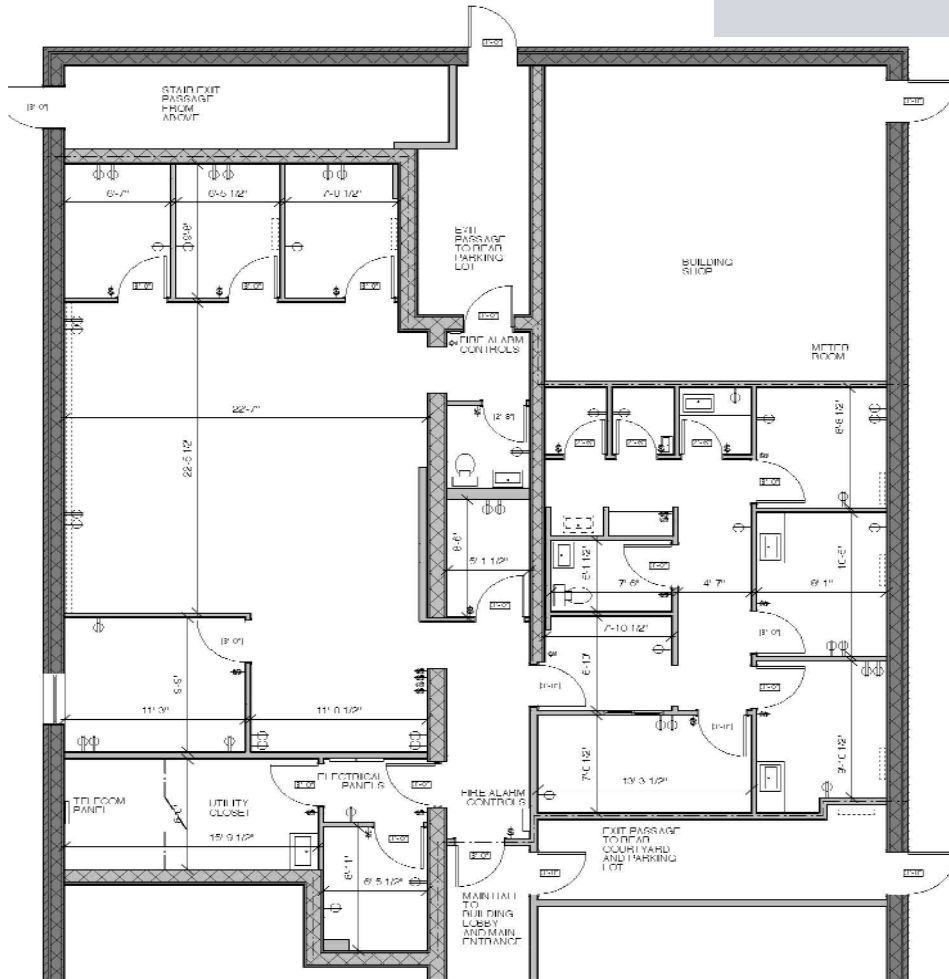
# 1714 LEXINGTON AVENUE

NORTHWEST CORNER OF 107TH STREET

EAST HARLEM

COMMUNITY/MEDICAL SPACE

## SPACE B



### COMMUNITY/MEDICAL SPACE AVAILABLE

**DESCRIPTION:** SPACE A - APPROX. 2,981 SF  
SPACE B - APPROX. 2,252 SF



575 MADISON AVENUE,  
3<sup>RD</sup> FLOOR, NY, NY 10022  
TEL. 212. 418. 2020  
FAX. 212. 418. 2005  
WWW.ELLIMAN.COM

### EXCLUSIVE AGENTS:

**JOSEPH AQUINO**

EXECUTIVE VICE PRESIDENT  
jaquino@elliman.com

**ARTHUR MAGLIO**

CONSULTANT  
amaglio@elliman.com