

112-116 HUDSON STREET TRIBECA

BETWEEN FRANKLIN STREET & N. MOORE STREET

PURCHASE PRICE \$6.5 MILLION

SPACE/SIZE:

112 HUDSON STREET / VACANT
PROJECTING \$215,950 PER ANNUM (\$175 PSF)
1,234 SQ/FT
832 SQ/FT

114-116 HUDSON STREET
PRESENTLY MED SPA
2,273 SQ/FT
1,769 SQ/FT
14 YEAR LEASE
PAYING \$222,480 PER ANNUM (\$100 PSF)
ESCALATES 3% PER ANNUM

PROPERTY TAXES:

112 HUDSON STREET
BLOCK 189 / LOT 1201 - \$13,819 PER ANNUM

114-116 HUDSON STREET
BLOCK 189 / LOT 18 — \$ 375 PER ANNUM
BLOCK 189 / LOT 1601 — \$4,966 PER ANNUM

COMMON CHARGES:

112 HUDSON STREET — \$8,424 PER ANNUM
114-116 HUDSON STREET — \$8,520 PER ANNUM

PROJECTED INCOME: \$438,430 PER ANNUM
EXPENSES: \$ 36,104 PER ANNUM

N.O.I. \$402,326 PER ANNUM

EXCLUSIVE AGENTS:

FAITH HOPE CONSOLO

CHAIRMAN, THE RETAIL GROUP
fconsole@elliman.com

JOSEPH AQUINO

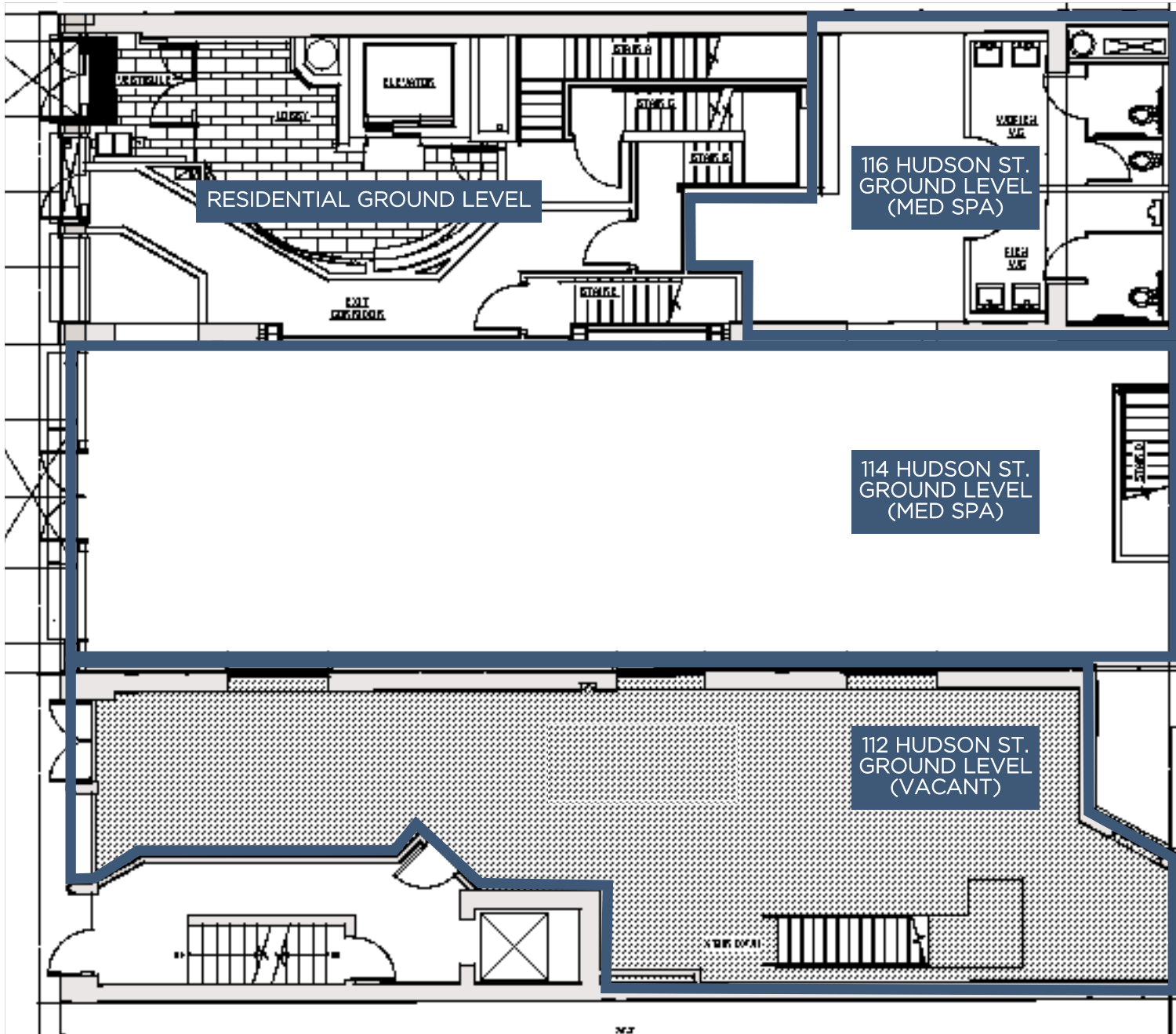
EXECUTIVE VICE PRESIDENT
jaquino@elliman.com



575 MADISON AVENUE 3RD FLOOR
TEL. 212. 418. 2020 FAX. 212. 418. 2005
WWW.ELLIMAN.COM
WWW.FAITH-CONSOLO.COM

112-116 HUDSON STREET TRIBECA

BETWEEN FRANKLIN STREET & N. MOORE STREET



112 HUDSON STREET:

GROUND LEVEL —
APPROX. 1,234 SF
BASEMENT LEVEL —
APPROX. 832 SF

114-116 HUDSON STREET:

GROUND LEVEL —
APPROX. 2,273 SF
BASEMENT LEVEL —
APPROX. 1,769 SF

TOTAL FRONTAGE:

APPROX. 60 FEET

EXCLUSIVE AGENTS:

FAITH HOPE CONSOLO

CHAIRMAN, THE RETAIL GROUP
fconsole@elliman.com

JOSEPH AQUINO

EXECUTIVE VICE PRESIDENT
jaquino@elliman.com



Prudential

**CRES Commercial
Real Estate**

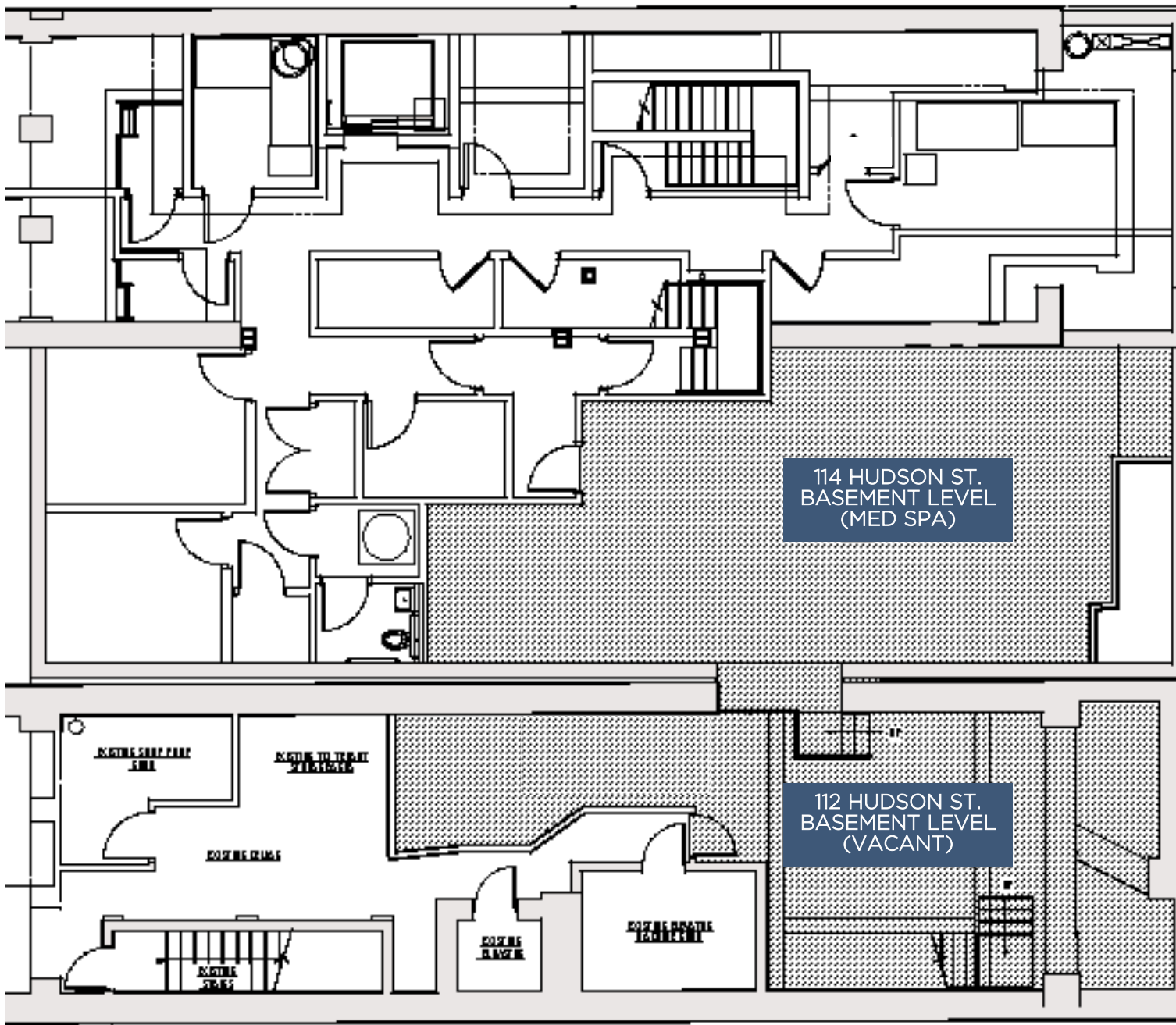
575 MADISON AVENUE
3RD FLOOR

TEL. 212. 418. 2020
FAX. 212. 418. 2005

WWW.ELLIMAN.COM
WWW.FAITH-CONSOLO.COM

112-116 HUDSON STREET TRIBECA

BETWEEN FRANKLIN STREET & N. MOORE STREET



112 HUDSON STREET:

GROUND LEVEL —
APPROX. 1,234 SF
BASEMENT LEVEL —
APPROX. 832 SF

114-116 HUDSON STREET:

GROUND LEVEL —
APPROX. 2,273 SF
BASEMENT LEVEL —
APPROX. 1,769 SF

TOTAL FRONTAGE:

APPROX. 60 FEET

EXCLUSIVE AGENTS:

FAITH HOPE CONSOLO

CHAIRMAN, THE RETAIL GROUP
fconsole@elliman.com

JOSEPH AQUINO

EXECUTIVE VICE PRESIDENT
jaquino@elliman.com



Prudential

**CRES Commercial
Real Estate**

575 MADISON AVENUE
3RD FLOOR
TEL. 212. 418. 2020
FAX. 212. 418. 2005
WWW.ELLIMAN.COM
WWW.FAITH-CONSOLO.COM